



P.O. Box 780  
Willoughby, Ohio 44096-0780  
440.347.0400 Office  
440.347.0100 Fax  
[www.monrealconsulting.com](http://www.monrealconsulting.com)



## SOLUTIONS

**Document Management**

**IT Infrastructure-Security**

**Managed Services**

**Microsoft® Dynamics**

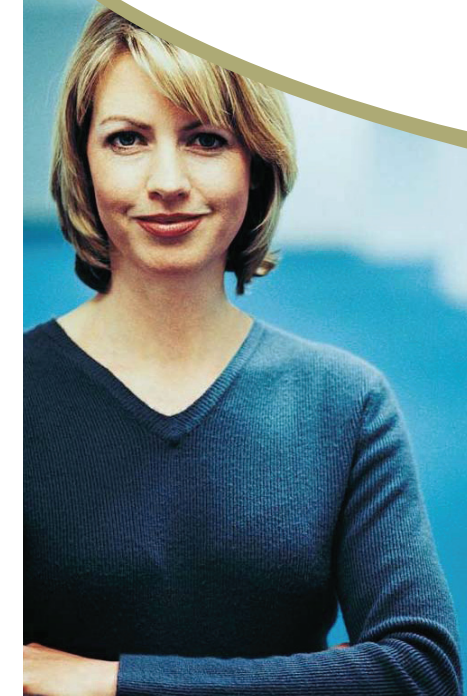
**Microsoft® Platforms**

**Staffing**

**Technology Advisory**

**Wireless and Wired Networks**

**Workforce Collaboration**



## INFRASTRUCTURE SECURITY

If your business is connected to the Internet, the Internet is also connected to your business! While this includes your customers, partners, and suppliers, it also includes a significant number of “bad guys” who want to get their hands on your data or add your site to their trophy collection. While both hackers and our penetration tools will test your network, we will tell you the vulnerabilities and how to fix them. Let us help you discover and close your security weaknesses before the “bad guys” find them.

Our comprehensive approach to testing includes black, white, and gray box testing.

Black box testing reflects a malicious hacker with no prior information about your infrastructure. We will scour publicly available information from Internet registries, social media sites, hosting providers, and other sources to gather as much collective information to leverage in our penetration tests. Unfortunately, black box testing alone will not provide a complete assessment of your security.

White box testing reflects a hacker with prior knowledge and approved access to your applications. This testing approach ensures that your trusted employees, partners, suppliers, customers, and other authorized entities have access to the data and applications they need to conduct business with you securely. No more and no less. White box testing complements black testing to ensure that the “bad guys” don’t get in and those you trust are using the system as approved. This joint testing strategy is typically referred to as gray box testing.

Gray box testing is a sequential process that starts with a black box test. We build upon the results of that test with internal information provided for the white box testing. This step-wise approach provides a comprehensive assessment of your system defenses and permits more specific penetration testing of your critical data and applications.



## PENETRATION TESTING

### PENETRATION SERVICES OFFERED

End-User Penetration  
 Endpoint Penetration  
 ERP Penetration  
 ICS Penetration  
 Mobile Application Penetration  
 Mobile Device Penetration  
 Network Device Penetration  
 Network System Penetration  
 Physical Penetration  
 VoIP Penetration  
 Web Application Penetration  
 Wireless Penetration

### ITEMS WE TEST FOR

XPath Injection (XPathi)  
 File Inclusion  
 Information Disclosure  
 Directory Traversal  
 Weak Encryption Algorithms  
 Application Error Messages  
 WEP, LEAP, WPA Vulnerabilities  
 VoIP Exploits  
 Known Vulnerabilities  
 Cross Frame Scripting (XFS)  
 HTML Injection (HTMLi)  
 CRLF Injection (CRLFi)  
 URL Redirection  
 Code Execution  
 Path Disclosure  
 Session Management  
 Vulnerabilities  
 Authentication & Authorization bugs  
 802.11 & Bluetooth Wireless  
 Cross-Site Scripting (XSS)  
 SQL Injection (SQLi)

LDAP Injection (LDAPi)  
 XPath Injection (XPathi)  
 File Inclusion  
 Information Disclosure  
 Directory Traversal  
 Weak Encryption Algorithms  
 Application Error Messages  
 WEP, LEAP, WPA Vulnerabilities  
 VoIP Exploits  
 Known Vulnerabilities  
 Cross Frame Scripting (XFS)  
 HTML Injection (HTMLi)  
 CRLF Injection (CRLFi)  
 URL Redirection  
 Code Execution  
 Path Disclosure  
 Session Management  
 Vulnerabilities  
 Authentication & Authorization bugs  
 802.11 & Bluetooth Wireless  
 Many more...

## FEATURED SECURITY OFFERINGS

### HIPAA Compliance

- Risk Analysis and Management
- Penetration Testing
- Re-evaluation
- Detailed Executive & Technical Report Deliverables

### PCI Compliance

- PCI DSS Gap Analysis
- Penetration Testing
- Network & Web Vulnerability Assessments
- Detailed Executive & Technical Report Deliverables

### Digital Forensics

- Computer Forensics (PC, MAC, Linux)
- Mobile Forensics (Android, iPhone, Blackberry)
- Network Forensics (Firewall, Router, Server)
- Detailed Executive & Technical Report Deliverables

### Network Device Auditing

- Configuration Audit against Security Industry Best Practices
- Engineering Gap Analysis against Vendor Best Practices
- Available as a monthly subscription
- Detailed Technical Report Deliverable

### Security Architecture

- Architecture Design Gap Analysis
- Multi-year Strategies
- Consulting on Technology Solutions Selection
- Detailed Executive & Technical Report Deliverables



## SECURITY WITH IT INFRASTRUCTURE

- Digital Forensics
- HIPAA Compliance
- Incident Response
- Managed Security
- Network Device Auditing
- PCI Compliance
- Penetration Testing
- Secure Code Auditing
- Security Architecture, Frameworks, and Implementations
- Vulnerability Assessments

## INCIDENT RESPONSE

- Incident Response Services
- 0-day & Targeted malware Analysis
- Quarterly Critical Incident Response Exercises
- CIRT Policy and Procedure Audit and Creation
- Proactive Threat Monitoring (One Time or Recurring)
- REAL Incident Handling
- Detailed Executive & Technical Report Deliverables

## SECURITY FRAMEWORKS

- Security Policy Auditing & Creation
- Compliance & Certification
- Consulting
- Security Awareness & Training Services
- Detailed Executive & Technical Report Deliverables

## SECURE CODE AUDITING

- Web Vulnerability Assessments
- Static Binary Analysis
- Blackbox, Graybox, & Whitebox Assessments
- Available as a monthly subscription
- Detailed Executive & Technical Report Deliverables